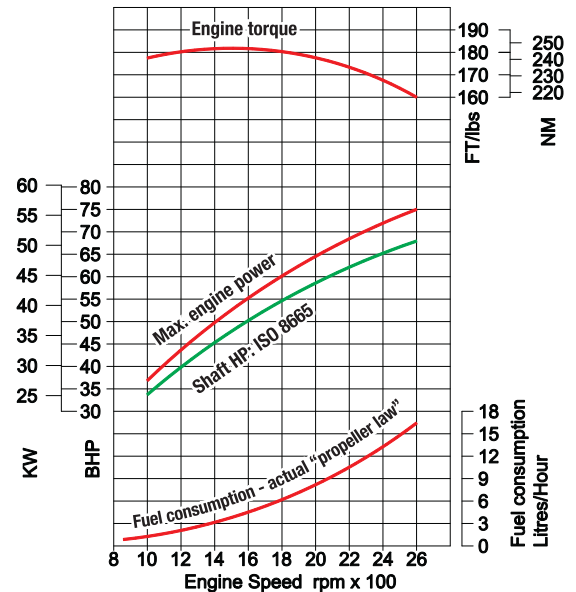


# BV3300 - 75bhp

MODEL BV3300

ISO-3064 8665



FUEL CONSUMPTION BASED ON PROPELLER BEING MATCHED AT FULL SPEED.

**4 Cylinders - 3318 cc's - 75bhp @ 2600rpm – Weight 414kg**

## Standard Specification

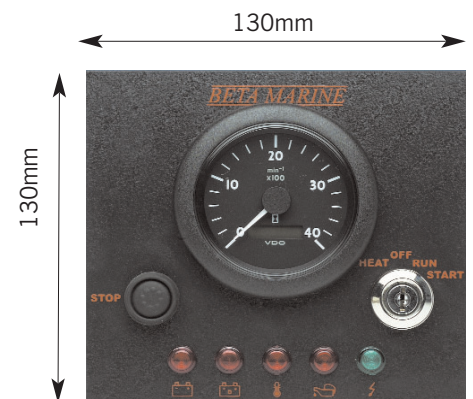
Beta Marine BV3300 - 4 cylinder, naturally aspirated, diesel propulsion engine developing 75 bhp at 2,600 rpm with a swept volume of 3,318 cc's. The engine is supplied complete (Recreational Craft Directive emission compliant) with keel cooled header tank and water cooled exhaust manifold, 2" bsp male dry exhaust outlet, fresh water pump, fuel filter with hand primer, loose fuel water separator, mechanical fuel lift pump, lubricating oil filter and sump pump, special quiet air intake filter, high inertia flywheel, 12v starter motor, 65 amp charging alternator for engine starting battery and a second 150 amp domestic battery charging alternator with large diameter drive pulley and polyvee belt drive, fully wired with warning light in panel, relay on engine and battery connection terminals, shutdown solenoid, calorifier connections, control panel type "AB" (with tachometer and hour recorder, keystart switch and pushbutton stop, green light for "power on", red warning lights and alarm buzzer for low oil pressure, high water temperature and no charge on each alternator) with 3m interconnection cable with multi pin plug and sockets. PRM gearbox with nominal 2:1 reduction, heavy duty engine feet and flexible mountings, morse type end fittings for speed and gear control, engine test certificate, operators manual. Green paint and packed on a skid base with a 3 year warranty.

- Reliable keel cooled, naturally aspirated, indirect injection diesel engine, based upon Kubota's highly advanced technology.
- Multi cylinder with high inertia flywheel for smooth running.
- Three vortex combustion for quiet running, low emissions and excellent fuel consumption.
- Quiet gear driven camshaft for engine reliability and easy servicing – no timing chains or tooth belts to replace.
- Newage PRM gearbox as standard with output rotation clockwise in ahead, viewed from gearbox end.

## Engine Options

Deluxe "C" Control panel  
 Travel Power 3.5 kVA – 230 Volt.  
 'Hospital' Exhaust silencer (high attenuation -35 dBA)  
 Hydraulic bow thrusters  
 Beta "Super Silence" acoustic housings.  
 See price list for a comprehensive range of accessories to cover a complete engine installation.

## Panel AB



Detailed engine drawings, brochures and manuals available under "Downloads"

**BETA MARINE**

Beta Marine Limited, Davy Way, Waterwells, Quedgeley, Gloucester GL2 2AD, U.K.  
 Tel: +44 (0)1452 723492 Fax: +44 (0)1452 883742 sales@betamarine.co.uk